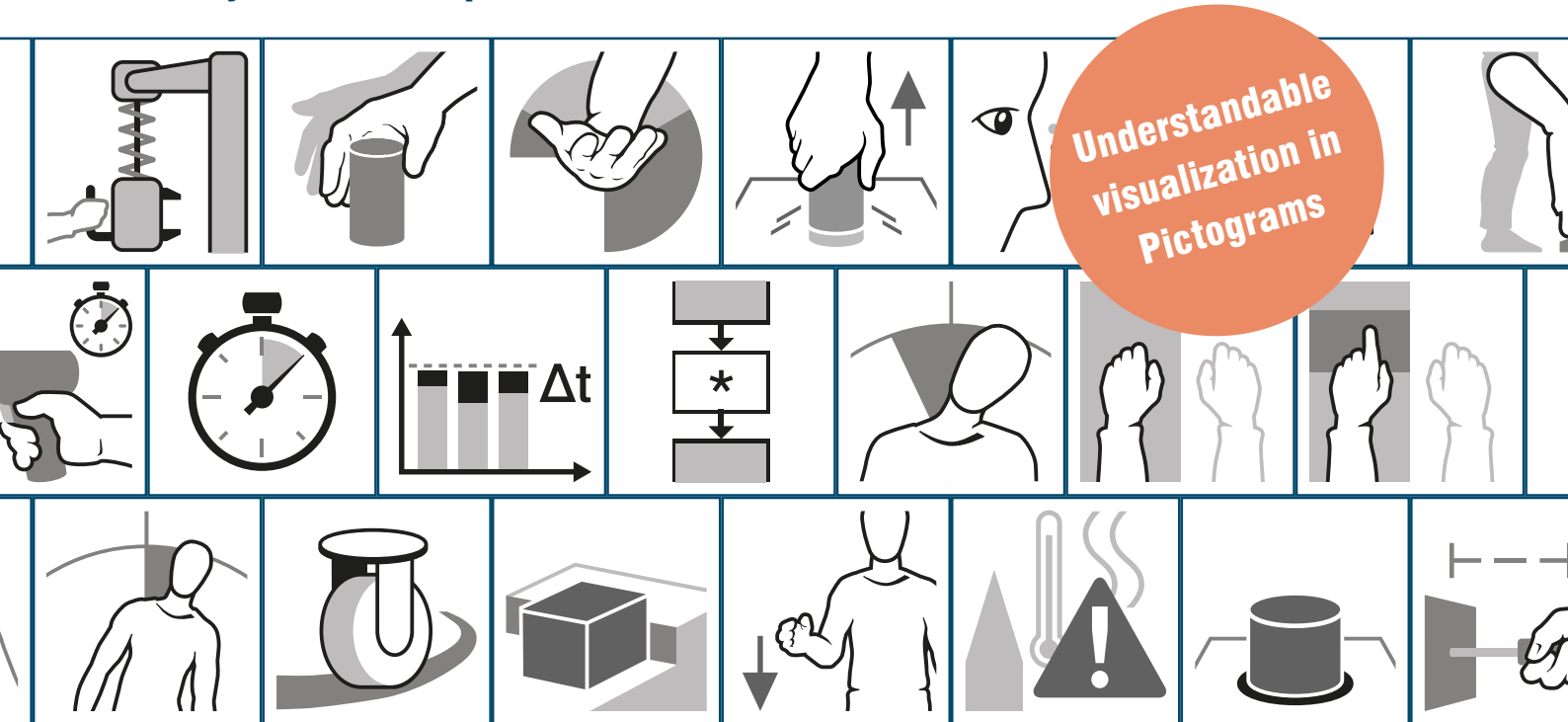


# MTM-HWD<sup>®</sup>

## The new era of work planning

Process description, time, ergonomics and productivity indicator eHPU in only one work step



Understandable visualization in Pictograms

### These companies have already tested MTM-HWD<sup>®</sup>

Bosch Automotive, BSH, NEFF, Faurecia Clean Mobility,  
 GEZE, HELLA, Kiekert, Siemens, Volkswagen,  
 Schaeffler Technologies, imk automotive  
 Schenker Deutschland, Audi, Daimler, Miele ...

#### MTM-HWD<sup>®</sup>...



# MTM-HWD® – Work thought from the human being

Characteristic of MTM-HWD® is a movement model derived from human beings. With the help of the MTM-HWD® process building block system, both the individual movements of the body, head and hand-arm system and the posture during and at the end of a cycle or beat can be described and evaluated chronologically.

## MTM-HWD® overview:

- no data card, pre-printed description form
- few application rules (partly automated)
- in focus: process type large-scale production
- Assessment of physical stress by means of EAWS® (Ergonomic Assessment Worksheet)
- ideal for design optimization (time and ergonomics)
- available in the languages of DE/EN/ES/PL/CN

**MTM-HWD® captures significantly more influencing factors than previous biomechanical and temporal evaluation methods. Thus, the description of human work gains immensely in quality.**

With MTM-HWD® begins a new era of work design		MTM-HWD® in Practical Use in the Volkswagen Group – Insights and Outlooks	
ema Work Designer speaks MTM-HWD®		Summary and conclusion of the HWD project	
ema speaks HWD – the New MTM Process Language as a Simulation Result		TIME TO WIN with digitization of human work design	

## We support you

- during the introduction and initial application of MTM-HWD®
- in training and further education in MTM-HWD®

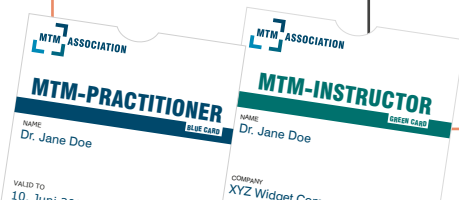
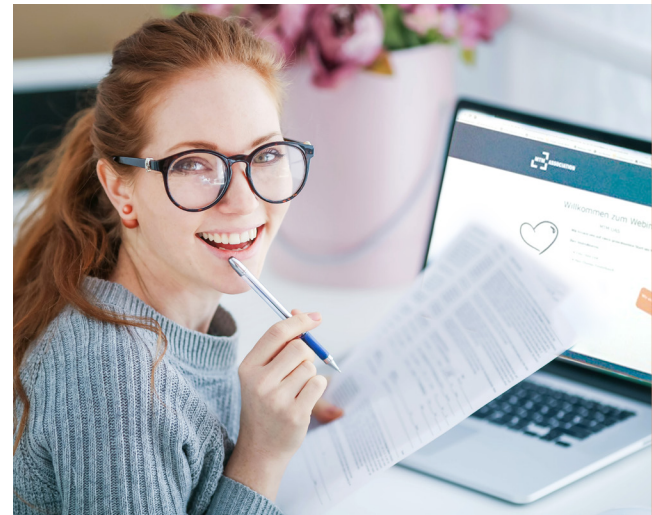


### MTM-Practitioner

1. MTM-1® Base
2. MTM-HWD®
3. MTM-HWD-Practitioner

### MTM-Instructor

4. MTM-1® (second week)
5. MTM-Instructor
6. License course MTM-HWD®



## Your contact person

For questions about MTM-HWD® – training, software and consulting – we are at your disposal.



**Dr. Thomas Finsterbusch**

Head of the MTM Academy  
Phone: +49 40 822779-39  
thomas.finsterbusch@mtm.org

**MTM ASSOCIATION e. V.**  
Elbchaussee 352  
22609 Hamburg, Germany

[training.mtm.org](http://training.mtm.org)  
[mtm.org/software](http://mtm.org/software)  
[mtm.org/mtm-beratung](http://mtm.org/mtm-beratung)

Follow us: